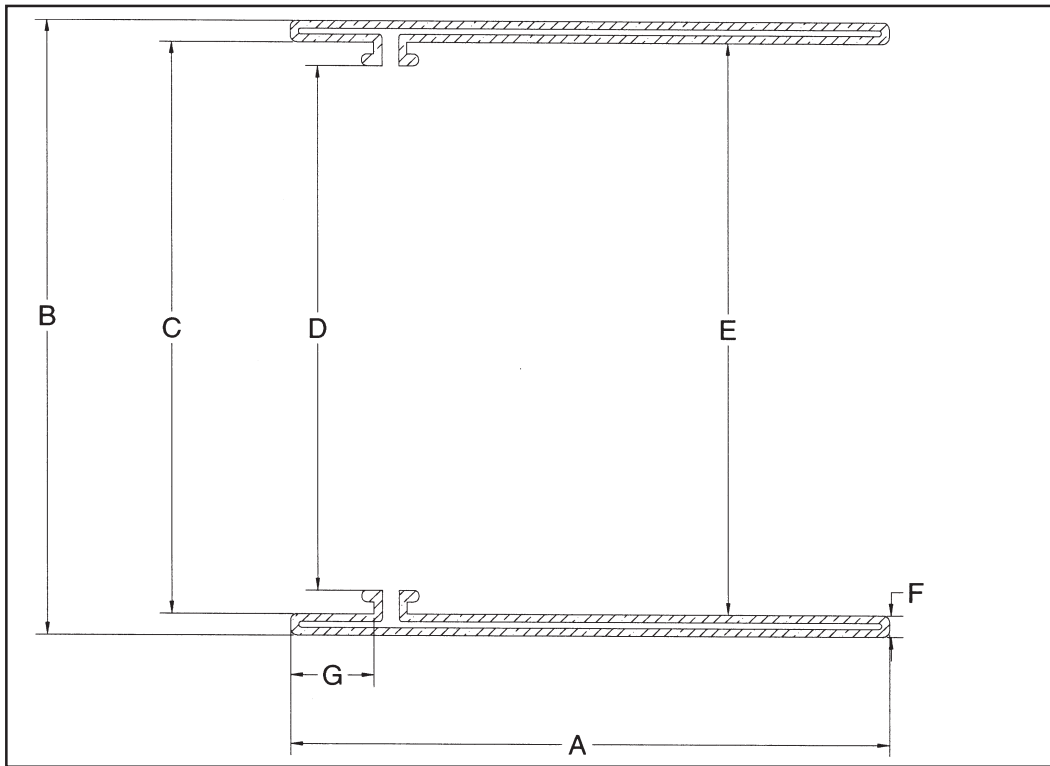


PB - Style Turn-up Bladders



| Catalog Number | Tire Rim Diameter | | Mounted Length "A" | | OD "B" | | Nose ID "C" | | Bead ID "D" | | Rear ID "E" | | Bladder Thickness "F" | | Nose Length "G" | |
|----------------|-------------------|-----|--------------------|-----|--------|-----|-------------|-----|-------------|-----|-------------|-----|-----------------------|-----|-----------------|----|
| | Inches | mm | Inches | mm | Inches | mm | Inches | mm | Inches | mm | Inches | mm | Inches | mm | Inches | mm |
| AQS1 | 12 | 203 | 8.00 | 203 | 11.04 | 280 | 10.26 | 261 | 9.55 | 243 | 10.1 | 257 | 0.34 | 8.6 | 1.25 | 32 |
| AVS1 | 12 | 229 | 9.00 | 229 | 11.04 | 280 | 10.26 | 261 | 9.55 | 243 | 10.1 | 257 | 0.34 | 8.6 | 1.25 | 32 |
| AUS1 | 12 | 254 | 10.00 | 254 | 11.04 | 280 | 10.26 | 261 | 9.55 | 243 | 10.1 | 257 | 0.34 | 8.6 | 1.25 | 32 |
| BQS1 | 13 | 203 | 8.00 | 203 | 11.96 | 304 | 11.25 | 286 | 10.83 | 275 | 11.20 | 285 | 0.34 | 8.6 | 1.25 | 32 |
| BVS1 | 13 | 229 | 9.00 | 229 | 11.96 | 304 | 11.25 | 286 | 10.83 | 275 | 11.20 | 285 | 0.34 | 8.6 | 1.25 | 32 |
| BUS1 | 13 | 254 | 10.00 | 254 | 11.96 | 304 | 11.25 | 286 | 10.83 | 275 | 11.20 | 285 | 0.34 | 8.6 | 1.25 | 32 |
| CQS1 | 14 | 203 | 8.00 | 203 | 12.96 | 329 | 12.18 | 309 | 11.54 | 293 | 12.11 | 308 | 0.34 | 8.6 | 1.25 | 32 |
| CVS1 | 14 | 229 | 9.00 | 229 | 12.96 | 329 | 12.18 | 309 | 11.54 | 293 | 12.11 | 308 | 0.34 | 8.6 | 1.25 | 32 |
| CUS1 | 14 | 254 | 10.00 | 254 | 12.96 | 329 | 12.18 | 309 | 11.54 | 293 | 12.11 | 308 | 0.34 | 8.6 | 1.25 | 32 |
| DQS1 | 15 | 203 | 8.00 | 203 | 13.75 | 349 | 13.07 | 332 | 12.54 | 319 | 13.08 | 332 | 0.34 | 8.6 | 1.25 | 32 |
| DVS1 | 15 | 229 | 9.00 | 229 | 13.75 | 349 | 13.07 | 332 | 12.54 | 319 | 13.08 | 332 | 0.34 | 8.6 | 1.25 | 32 |
| DUS1 | 15 | 254 | 10.00 | 254 | 13.75 | 349 | 13.07 | 332 | 12.54 | 319 | 13.08 | 332 | 0.34 | 8.6 | 1.25 | 32 |