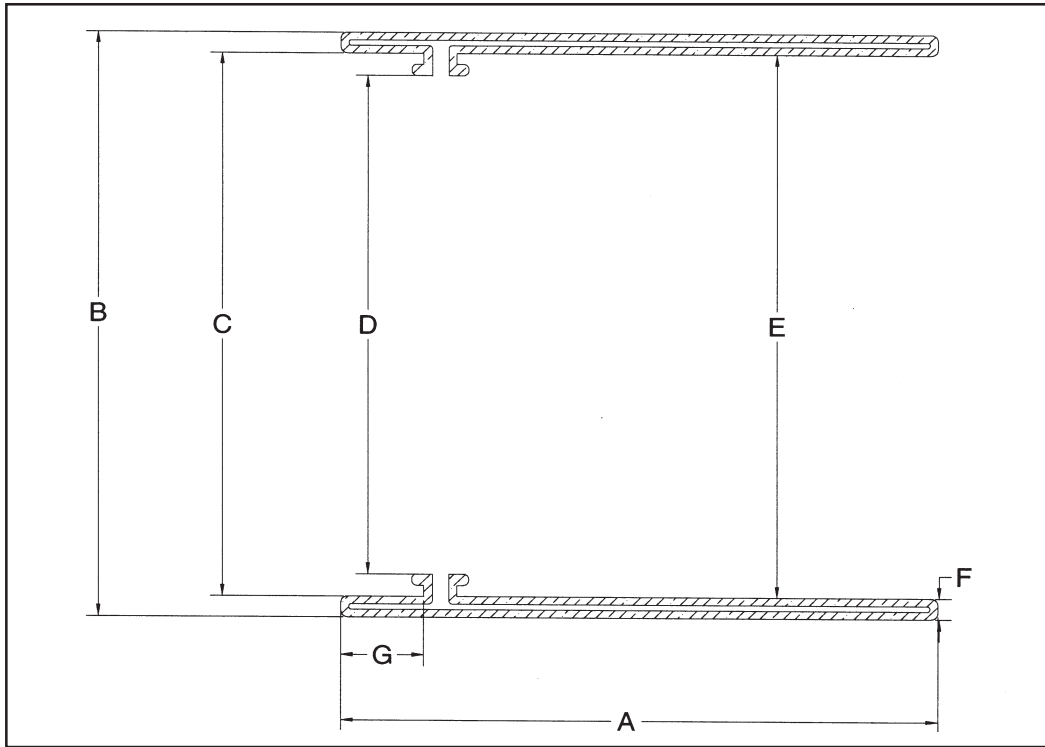


TA KU - Style Turn-up Bladders



Catalog Number	Tire Rim Diameter		Mounted Length "A"		OD "B"		Nose ID "C"		Bead ID "D"		Rear ID "E"		Bladder Thickness "F"		Nose Length "G"	
	Inches		Inches	mm	Inches	mm	Inches	mm	Inches	mm	Inches	mm	Inches	mm	Inches	mm
BBCWS	14		12.00	305	12.00	305	11.00	279	10.34	263	11.00	279	0.500	12.7	0.835	21
BBCTTS	14		16.00	406	12.00	305	11.00	279	10.34	263	11.00	279	0.500	12.7	0.835	21
BBFWS	16		12.00	305	13.50	343	12.50	318	11.40	290	13.00	330	0.500	12.7	0.835	21
BBFTTS	16		16.00	406	13.50	343	12.50	318	11.40	290	13.00	330	0.500	12.7	0.835	21
BBHWS	18		12.00	305	15.48	393	14.48	368	13.40	340	14.80	376	0.500	12.7	0.835	21
BBHTTS	18		16.00	406	15.48	393	14.48	368	13.40	340	14.80	376	0.500	12.7	0.835	21
BBJWS	19		12.00	305	16.48	419	15.48	393	14.40	366	15.80	401	0.500	12.7	0.835	21
BBJTTS	19		16.00	406	16.48	419	15.48	393	14.40	366	15.80	401	0.500	12.7	0.835	21
BBKWS	20		12.00	305	17.48	444	16.48	419	15.40	391	16.80	427	0.500	12.7	0.835	21
BBKTTS	20		16.00	406	17.48	444	16.48	419	15.40	391	16.80	427	0.500	12.7	0.835	21
BBUWS	21		12.00	305	18.48	469	17.48	444	16.40	417	17.80	452	0.500	12.7	0.835	21
BBUUTTS	21		16.00	406	18.48	469	17.48	444	16.40	417	17.80	452	0.500	12.7	0.835	21